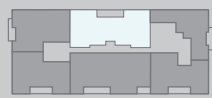
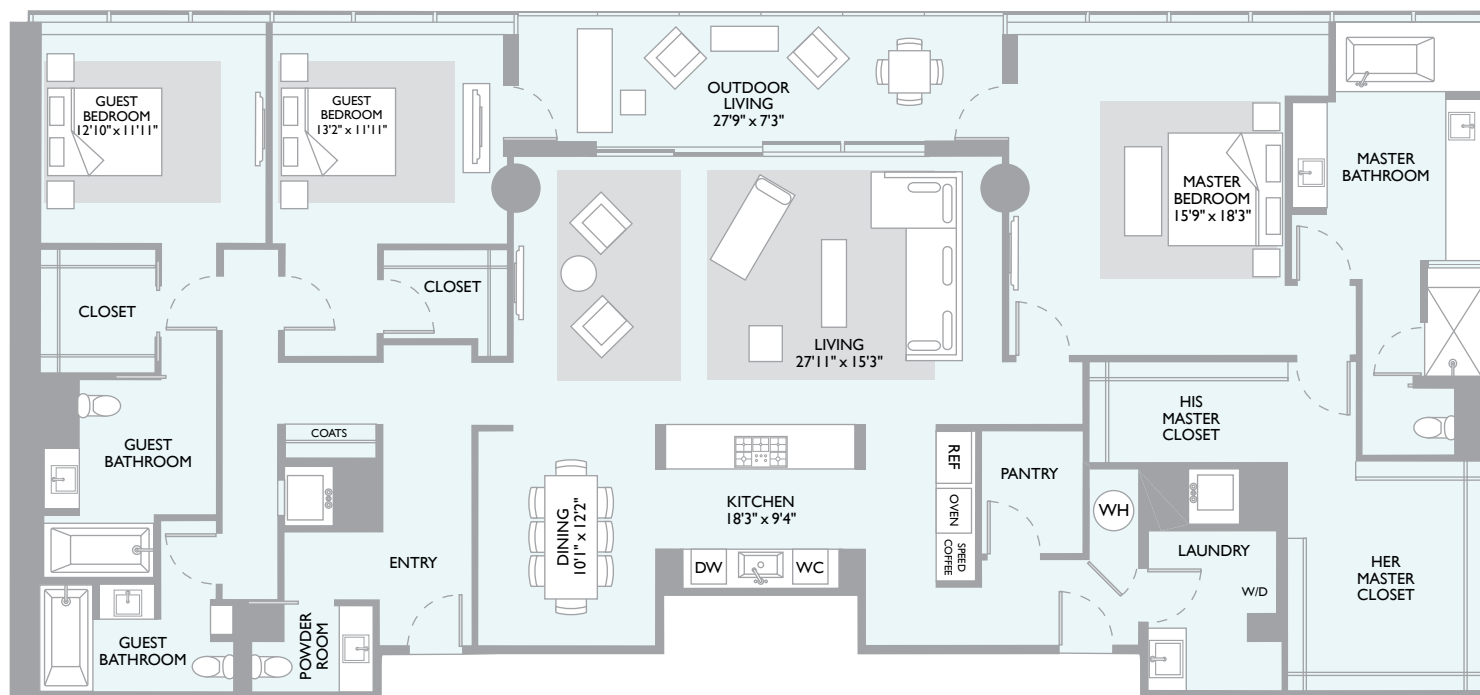




AUSTIN
THE RESIDENCES



W SUB-PENTHOUSE 3C

3073 SF / 2871 SF Interior / 202 SF Balcony / 3 Bedrooms / 3.5 Bathrooms

North Center

EXPLORE WAUSTINRESIDENCES.COM OR 512.322.9221

A CJUF II STRATUS BLOCK 21 LLC PROJECT. THE RESIDENCES AT W AUSTIN ARE NOT OWNED, DEVELOPED OR SOLD BY STARWOOD HOTELS & RESORTS WORLDWIDE, INC., CJUF II STRATUS BLOCK 21 LLC OR THEIR AFFILIATES. CJUF II STRATUS BLOCK 21 LLC USES THE W® TRADEMARKS AND TRADE NAMES UNDER A LICENSE FROM STARWOOD HOTELS & RESORTS WORLDWIDE, INC. STARWOOD HOTELS & RESORTS WORLDWIDE, INC. AND THEIR AFFILIATES ARE NOT RESPONSIBLE FOR THE CONTENT PRESENTED IN THIS WEB SITE, INCLUDING BUT NOT LIMITED TO, ANY ADVERTISING CLAIMS, MARKETING PRACTICES, AND DATA COLLECTION, USE AND PRIVACY PRACTICES.



W SUB-PENTHOUSE 3C

RESIDENCE FEATURES

- North Exposures
- Floor-to-Ceiling Ultra High-Efficiency, High Visibility Window System
- Living Area with Ceiling Height of Approximately 12'6"
- Imported European Wide-Plank Wood Floors Treated with Natural Oil, throughout Living Areas
- Architectural Ceiling Coves along Glazed Perimeters for Window Treatments, including Electrical Conduits for Mechanized Shades (Window Treatments not Included)
- Architectural Coves for Wall and Ceiling Indirect Lighting
- Glass Panel and Stainless Steel Railings on Balcony
- Powder Room with Dornbracht® Fixtures and Black Honed Granite Vanity Top
- Laundry Room with Utility Sink
- Entry Gallery
- Walk-In Pantry
- Service Entrance
- Coat Closet

KITCHEN AND DINING

- Fully Integrated Bulthaup® Kitchen with Black Brown Oak Cabinet Fronts
- Dual Spray Pullout Kitchen Faucet in Polished Chrome
- Imported European Wide-Plank Wood Floor Treated with Natural Oil
- Miele® Refrigerator and Freezer with Integrated Panel to Match Cabinetry
- Miele® Stainless Steel Gas Combi-Set Cooktop
- Miele® 30" Master Chef Double Oven with Warming Drawer
- Miele® 24" Stainless Steel Speed Oven
- Miele® 24" Built-In Coffee System
- Miele® Stainless Steel Ventilation Hood System
- Miele® Dishwasher with Integrated Panel to Match Cabinetry
- Miele® Undercounter Wine Refrigerator
- Stainless Steel Undermount Kitchen Sink
- Garbage Disposal System
- Carrara Marble Countertops

LIVING AND DINING

- Floor to Ceiling Windows: North Views
- Imported European Wide-Plank Wood Floor Treated with Natural Oil
- Access to Outdoor Living Area

MASTER BEDROOM SUITE

- Windows with Views to the North
- Imported European Wide-Plank Wood Floor Treated with Natural Oil
- His and Her Closets
- Access to Outdoor Living Area

MASTER BATHROOM

- Windows with Views to the North
- Bathroom Floors, Vanity Tops and Walls in Carrara Marble
- Double Vanity Area with Above-Counter Duravit® Wash Basins designed by Philippe Starck
- Duravit® Tub Designed by Philippe Starck
- Dornbracht® Lavatory Faucets
- Dornbracht® Tub Faucet
- Dornbracht® Shower System
- Kohler® Water Conserving Dual-Flush Toilet

GUEST BEDROOM #1

- Windows with Views to the North
- 100% Wool Luxury Carpet Putty Colored
- Access to Outdoor Living Area

GUEST BATHROOM #1

- Bathroom Floors, Vanity Tops and Walls in Carrara Marble
- Above-Counter Wash Basin
- Kohler® Lavatory Faucet
- Kohler® Tub/Shower Fixtures
- Kohler® Water Conserving Dual-Flush Toilet

GUEST BEDROOM #2

- Windows with Views to the North
- 100% Wool Luxury Carpet Putty Colored

GUEST BATHROOM #2

- Bathroom Floors, Vanity Tops and Walls in Carrara Marble
- Above-Counter Wash Basin
- Kohler® Lavatory Faucet
- Kohler® Tub/Shower Fixtures
- Kohler® Water Conserving Dual-Flush Toilet