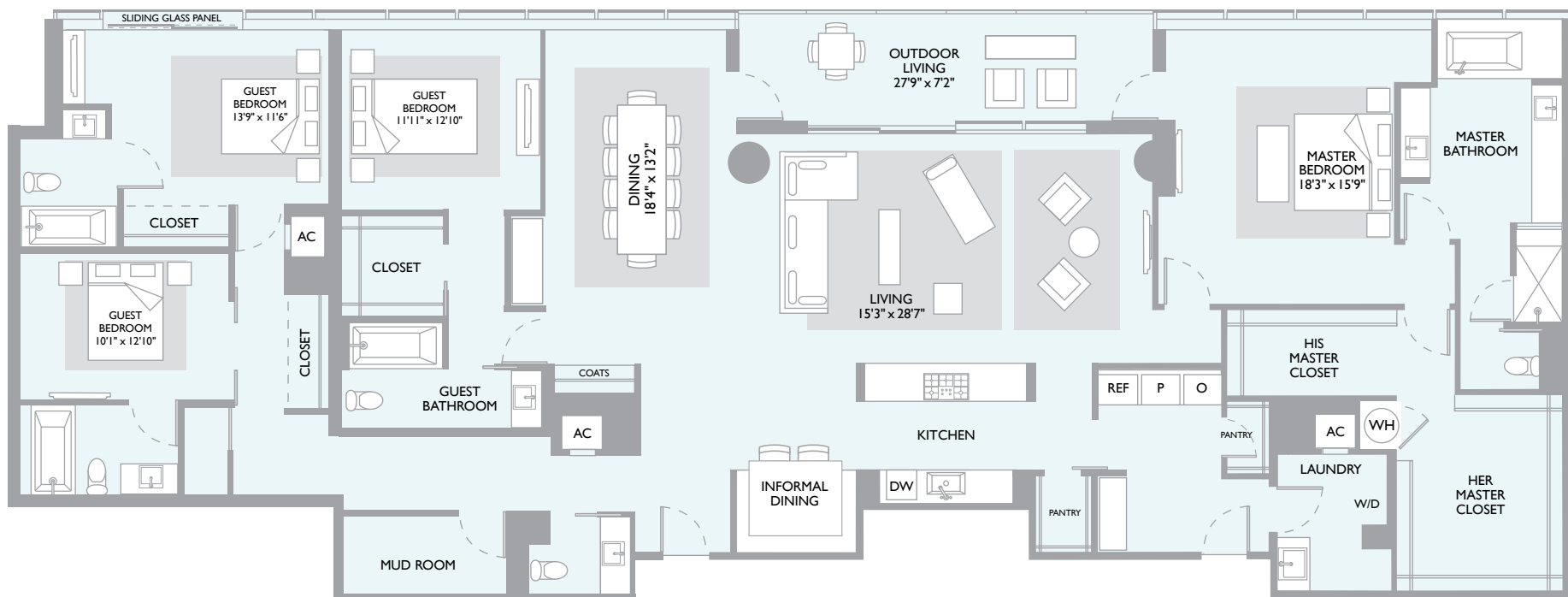




AUSTIN  
THE RESIDENCES



## W RESIDENCE 3305

3709 SF / 3510 SF Interior / 199 SF Balcony / 4 Bedrooms / 4.5 Bathrooms

North Center

EXPLORE [WAUSTINRESIDENCES.COM](http://WAUSTINRESIDENCES.COM) OR 512.322.9221

A CJUF II STRATUS BLOCK 21 LLC PROJECT. THE RESIDENCES AT W AUSTIN ARE NOT OWNED, DEVELOPED OR SOLD BY STARWOOD HOTELS & RESORTS WORLDWIDE, INC., CJUF II STRATUS BLOCK 21 LLC OR THEIR AFFILIATES. CJUF II STRATUS BLOCK 21 LLC USES THE W® TRADEMARKS AND TRADE NAMES UNDER A LICENSE FROM STARWOOD HOTELS & RESORTS WORLDWIDE, INC. STARWOOD HOTELS & RESORTS WORLDWIDE, INC. AND THEIR AFFILIATES ARE NOT RESPONSIBLE FOR THE CONTENT PRESENTED IN THIS WEB SITE, INCLUDING BUT NOT LIMITED TO, ANY ADVERTISING CLAIMS, MARKETING PRACTICES, AND DATA COLLECTION, USE AND PRIVACY PRACTICES.



# W RESIDENCE 3305

## RESIDENCE FEATURES

- North Exposures
- Floor-to-Ceiling Ultra High-Efficiency, High Visibility Window System
- Living Area with Ceiling Height of Approximately 10'6"
- Imported European Wide-Plank Wood Floors Treated with Natural Oil, throughout Living Areas
- Architectural Ceiling Coves along Glazed Perimeters for Window Treatments, including Electrical Conduits for Mechanized Shades (Window Treatments not Included)
- Architectural Coves for Wall and Ceiling Indirect Lighting
- Glass Panel and Stainless Steel Railings on Balcony
- Powder Room with Dornbracht® Fixtures and Black Honed Granite Vanity Top
- Laundry Room with Utility Sink
- Entry Gallery
- Walk-In Pantry
- Service Entrance
- Coat Closet
- Mud Room/Storage Room

## KITCHEN

- Fully Integrated Bulthaup® Kitchen
- Dual Spray Pullout Kitchen Faucet in Polished Chrome
- Imported European Wide-Plank Wood Floor Treated with Natural Oil
- Miele® Refrigerator and Freezer with Integrated Panel to Match Cabinetry
- Miele® Stainless Steel Gas Cooktop
- Miele® 30" Master Chef Oven
- Miele® 24" Stainless Steel Speed Oven
- Miele® Stainless Steel Ventilation Hood System
- Miele® Dishwasher with Integrated Panel to Match Cabinetry
- Stainless Steel Undermount Kitchen Sink
- Garbage Disposal System
- Carrara Marble Stone Countertops
- Breakfast Area

## LIVING AND DINING

- Floor to Ceiling Windows: North Views
- Imported European Wide-Plank Wood Floor Treated with Natural Oil

## MASTER BEDROOM SUITE

- Windows with Views to the North
- 100% Wool Luxury Carpet Putty Colored
- His and Her Closets
- Access to Outdoor Living Area

## MASTER BATHROOM

- Windows with Views to the North
- Bathroom Floors, Vanity Tops and Walls in Marble
- Double Vanity Area with Above-Counter Duravit® Wash Basins designed by Philippe Starck
- Duravit® Tub Designed by Philippe Starck
- Dornbracht® Lavatory Faucets
- Dornbracht® Tub Faucet
- Dornbracht® Shower System
- Kohler® Water Conserving Dual-Flush Toilet

## GUEST BEDROOM #1

- Windows with Views to the North
- 100% Wool Luxury Carpet Putty Colored
- Sliding Glass Panel that Opens to Outdoors

## GUEST BATHROOM #1

- Bathroom Floors, Vanity Tops and Walls in Marble
- Above-Counter Wash Basin
- Kohler® Lavatory Faucet
- Kohler® Tub/Shower Fixtures
- Kohler® Water Conserving Dual-Flush Toilet

## GUEST BEDROOM #2

- Windows with Views to the North
- 100% Wool Luxury Carpet Putty Colored

## GUEST BATHROOM #2

- Bathroom Floors, Vanity Tops and Walls in Marble
- Above-Counter Wash Basin
- Kohler® Lavatory Faucet
- Kohler® Tub/Shower Fixtures
- Kohler® Water Conserving Dual-Flush Toilet

## GUEST BEDROOM #3

- 100% Wool Luxury Carpet Putty Colored

## GUEST BATHROOM #3

- Bathroom Floors, Vanity Tops and Walls in Marble
- Above-Counter Wash Basin
- Kohler® Lavatory Faucet
- Kohler® Tub/Shower Fixtures
- Kohler® Water Conserving Dual-Flush Toilet