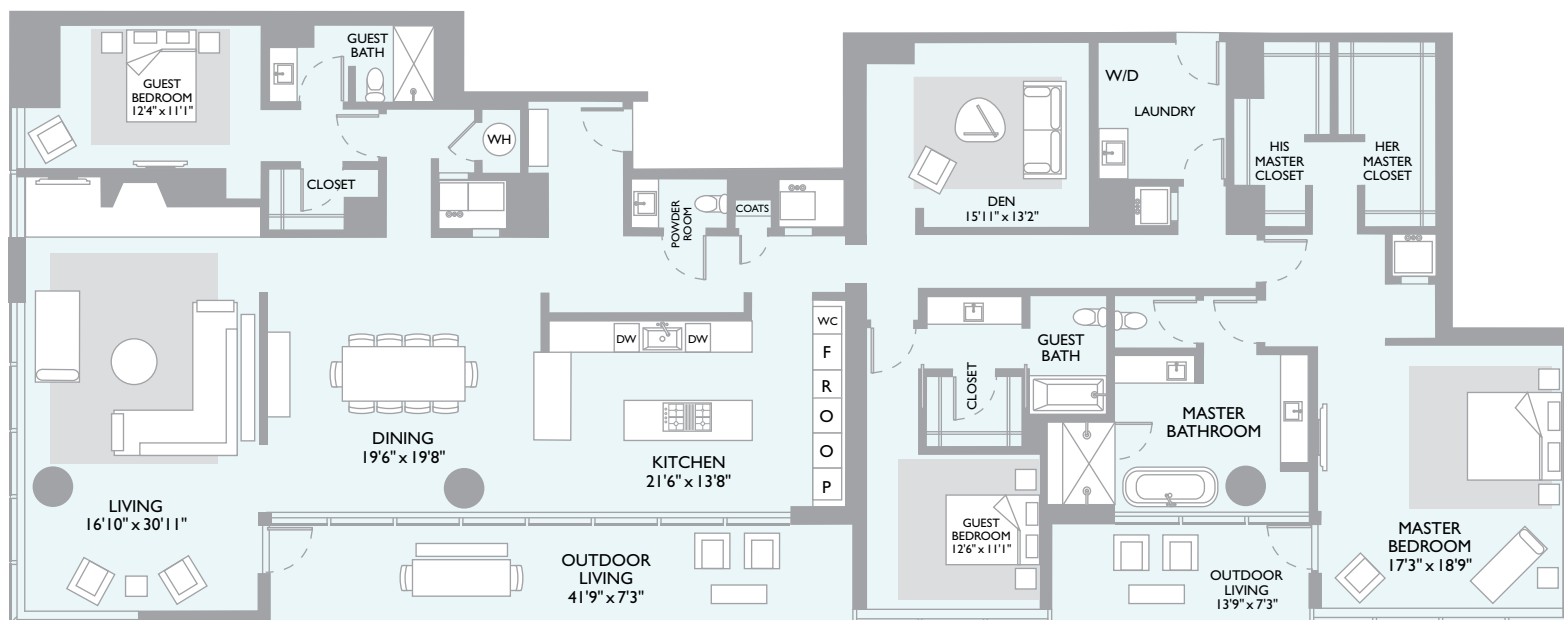




AUSTIN
THE RESIDENCES



W PENTHOUSE 4

4255 SF / 3817 SF Interior / 438 SF Balcony / 3 Bedrooms / 3.5 Bathrooms

Den / 2 Balconies / Southwest Corner

EXPLORE WAUSTINRESIDENCES.COM OR 512.322.9221

A CJUF II STRATUS BLOCK 21 LLC PROJECT. THE RESIDENCES AT THE W AUSTIN ARE NOT OWNED, DEVELOPED OR SOLD BY STARWOOD HOTELS & RESORTS WORLDWIDE, INC., OR ITS AFFILIATES. CJUF II STRATUS BLOCK 21 LLC USES THE W® TRADEMARKS AND TRADE NAMES UNDER A LICENSE FROM STARWOOD HOTELS & RESORTS WORLDWIDE, INC. ALL ADVERTISING, PROMOTIONAL MATERIALS, SITE PLANS AND PRICING INFORMATION ASSOCIATED WITH THE PROJECT AND THE UNITS, IF ANY, ARE PRELIMINARY IN NATURE AND ARE SUBJECT TO CHANGE BY CJUF II STRATUS BLOCK 21 LLC OR ITS AFFILIATES WITHOUT NOTICE. NO GUARANTEES OR REPRESENTATIONS WHATSOEVER ARE MADE THAT THE SPECIFICATIONS, FEATURES, AMENITIES AND FACILITIES, AND EXISTING OR FUTURE VIEWS OF THE PROJECT AND SURROUNDING AREAS, DEPICTED BY ANY ARTIST'S RENDERINGS OR OTHERWISE DESCRIBED HEREIN, WILL BE PROVIDED, OR IF PROVIDED, WILL BE OF THE SAME TYPE, COLOR, SIZE, LOCATION, OR NATURE AS DEPICTED OR DESCRIBED HEREIN. ALL DIMENSIONS ARE APPROXIMATE. NO STATEMENT SHOULD BE RELIED UPON IF NOT MADE IN CONTRACT. THIS IS NOT AN OFFER TO SELL, OR SOLICITATION OF OFFERS TO BUY, ANY CONDOMINIUM UNITS OR SUBDIVIDED LAND IN NEW YORK, NEW JERSEY, OR ANY OTHER STATE WHERE SUCH SOLICITATION OR OTHER OFFER TO RESIDENTS OF SUCH STATES CANNOT BE MADE OR WHERE PRIOR REGISTRATION IS REQUIRED. OBTAIN THE PROPERTY REPORT OR ITS EQUIVALENT, REQUIRED BY FEDERAL AND STATE LAW AND READ IT BEFORE SIGNING ANYTHING. NO FEDERAL OR STATE AGENCY HAS JUDGED THE MERITS OR VALUE, IF ANY, OF THIS PROPERTY. WARNING: CA. DEPT. OF REAL ESTATE HAS NOT INSPECTED, EXAMINED OR QUALIFIED THIS PROPERTY.



W PENTHOUSE 4

RESIDENCE FEATURES

- South and West Exposures
- Floor-to-Ceiling Ultra High-Efficiency, High Visibility Window System
- Living Area with Ceiling Height of Approximately 14' (20' on top floor)
- Imported European Wide-Plank Wood Floors Treated with Natural Oil
- Architectural Ceiling Coves along Glazed Perimeters for Window Treatments, including Electrical Conduits for Mechanized Shades (Window Treatments not Included)
- Architectural Coves for Wall and Ceiling Indirect Lighting
- Glass Panel Railings on the Two Balconies
- Private 3-Car Garage
- Fireplace
- Entry Gallery
- Service Entrance
- Powder Room with Dornbracht® Fixtures
- Laundry Room with Utility Sink
- Coat Closet

KITCHEN AND DINING

- Fully Integrated Bulthaup® Kitchen with a Selection of Cabinet Fronts
- Dual Spray Pullout Kitchen Faucet in Polished Chrome
- Imported European Wide-Plank Wood Floor Treated with Natural Oil
- Miele® Side-by-Side Refrigerator and Freezer with Integrated Panels to Match Cabinetry
- Full Height Miele® Integrated Wine Refrigerator with Integrated Panels to Match Cabinetry
- Miele® Stainless Steel Gas Cooktop
- Miele® 30" Master Chef Double Oven
- Buyer's Selection of Two: Miele® 24" Stainless Steel Speed Oven, Miele® Steam Oven or Miele® Built-In Coffee System
- Miele® Stainless Steel Ventilation Hood System
- Miele® Dual Dishwasher with Integrated Panel to Match Cabinetry
- Stainless Steel Undermount Kitchen Sink
- Garbage Disposal System
- Buyer's Selection of Granite, Carrara Marble or Limestone Countertops

LIVING AND DINING

- Floor to Ceiling Windows: South and West Exposures
- Imported European Wide-Plank Wood Floor Treated with Natural Oil
- Access to Outdoor Living Room
- Fireplace

MASTER BEDROOM SUITE

- Windows with Views to the South
- Buyer's Selection of Luxury Carpets or Imported European Wide-Plank Wood Floors Treated with Natural Oil
- Access to Private Master Bedroom Outdoor Living Room
- His and Her Closets

MASTER BATHROOM

- Windows with Views to the South
- Bathroom Floors, Vanity Tops and Walls in Limestone, Marble or Granite
- Dual Vanity Area with Above-Counter Duravit® Wash Basins designed by Philippe Starck
- Duravit® Over-sized Tub with Air Jet System Designed by Philippe Starck
- Dornbracht® Lavatory Faucets
- Dornbracht® Tub Faucet
- Dornbracht® Steam Shower with Dual Shower Heads
- Kohler® Water Conserving Dual-Flush Toilet
- Flat Screen Television

GUEST BEDROOM #1

- Window with Views to the West
- Buyer's Selection of Luxury Carpets

GUEST BATHROOM #1

- Bathroom Floors, Vanity Tops and Walls in Limestone, Marble or Granite
- Above-Counter Wash Basin
- Kohler® Lavatory Faucet
- Kohler® Shower System
- Kohler® Water Conserving Dual-Flush Toilet

GUEST BEDROOM #2

- Windows with Views to the South
- Buyer's Selection of Luxury Carpets

GUEST BATHROOM #2

- Bathroom Floors, Vanity Tops, and Walls in Limestone, Granite or Marble
- Above-Counter Wash Basin
- Kohler® Lavatory Faucet
- Kohler® Shower System
- Kohler® Water Conserving Dual-Flush Toilet